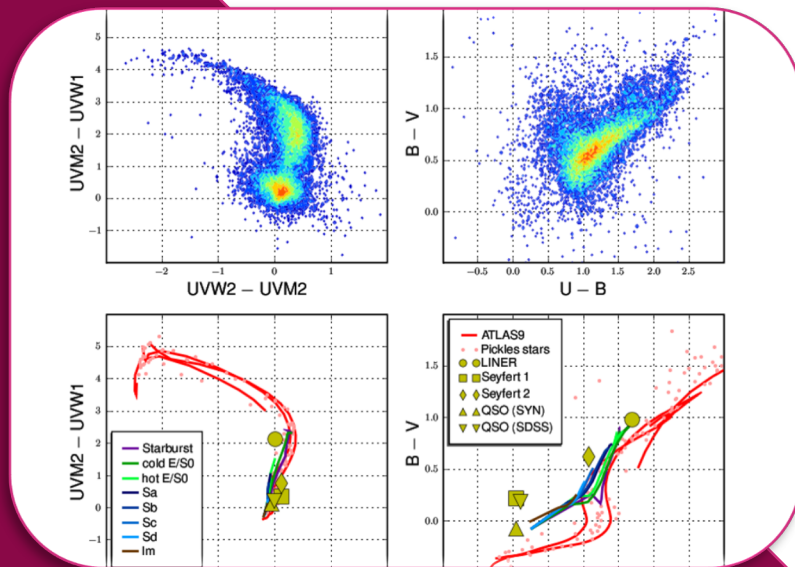




Mathew Page

Organization: UCL/MSSL

Position: Coordinator for UCL/MSSL. Professor in University College London's Mullard Space Science Laboratory (MSSL)



Mat is Professor of Astrophysics at the Mullard Space Science Laboratory (MSSL), University College London (UCL) in the United Kingdom (UK). He is Principal Investigator for the XMM-Newton Optical Monitor.

As a PhD student at MSSL, Mat worked on the optical identification of X-ray sources and studied the cosmological evolution of active galactic nuclei. Subsequently, his research interests broadened to encompass infrared and ultraviolet extragalactic surveys, high-resolution X-ray spectroscopy and gamma-ray bursts.

In XMM2ATHENA, Mat is the leader of Work Package 7, in charge of the classification of the ultraviolet and optical sources found in XMM-Newton Optical Monitor images.